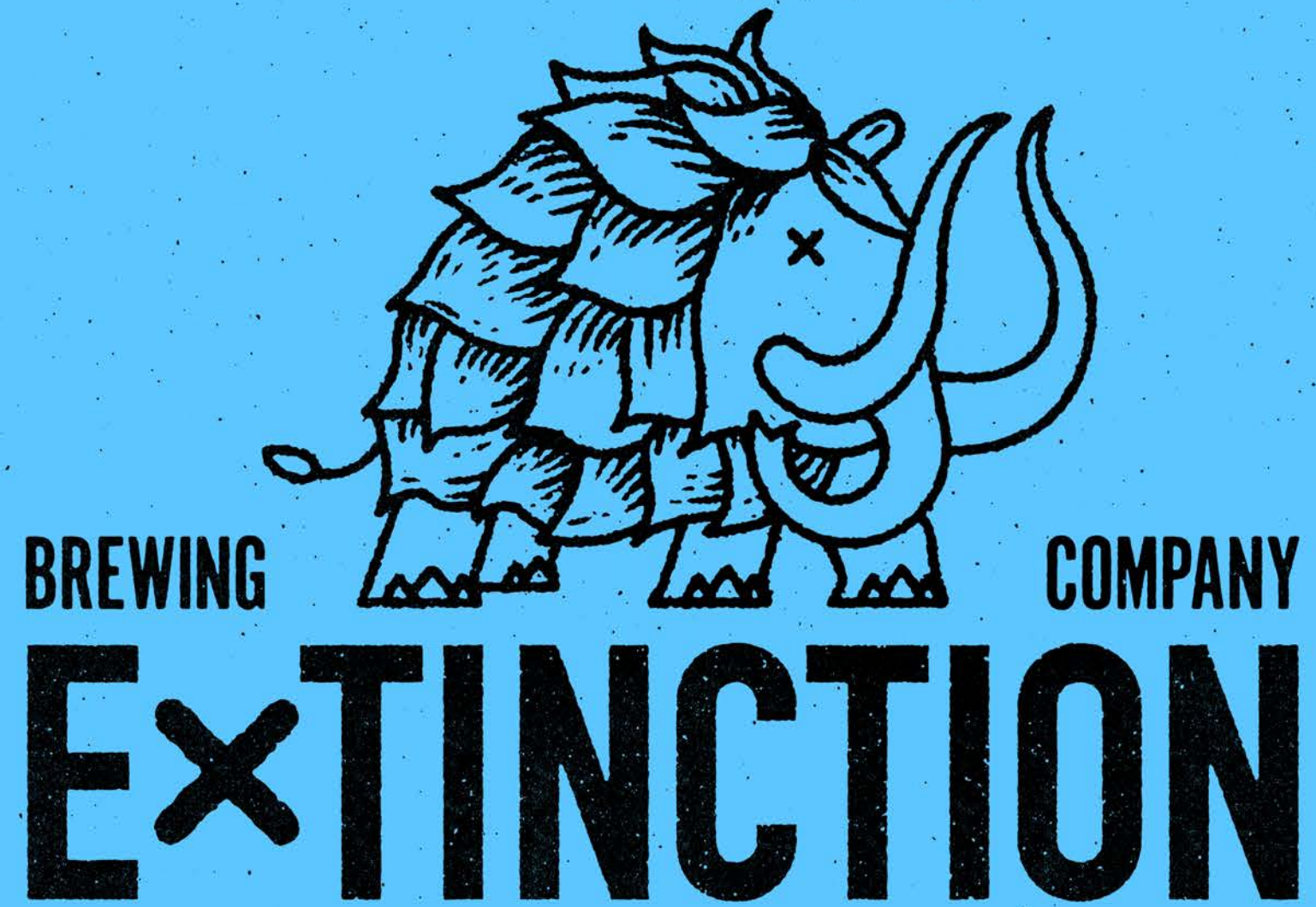




**EXTINCTION BREWERY**

Branding







BREAKFAST MENU

9:00AM - 11:30AM / MON TO FRI

9:00AM - 11:00AM / SAT & SUN

**FULL ENGLISH BREAKFAST\*** ..... £6.95

Baxter's of Clifton award winning sausage, smoked back bacon, homemade hash brown, sautéed mushrooms, grilled tomato, baked beans and a choice of poached, scrambled or fried egg

**VEGETARIAN BREAKFAST\***(v) ..... £6.95

Two Quorn sausages, homemade hash brown, sautéed mushrooms, grilled tomato, baked beans, and a choice of poached, scrambled or fried egg

**AMERICAN STYLE PANCAKES**

Layered pancakes with maple syrup and crispy bacon ..... 5.95

Layered pancakes with maple syrup and blue berries ..... 5.95

**EGGS BENEDICT** ..... 6.95

Toasted English muffin, two soft poached eggs, crispy bacon and hollandaise

**PORRIDGE & GRANOLA**

Smooth oat porridge served with honey & toasted seeds (v) ..... £2.95

Jordans Granola, berries & Maynard's Yoghurt (v) ..... £2.95

**BREAKFAST BAPS**

A freshly baked bap filled with one of the follwing:

Sausage ..... £3.50

Bacon ..... £3.50

Egg of your choice (v) ..... £2.95

**ON TOAST**

Fried, scrambled or poached egg served on two slices of white or granary toast

Sautéed mushrooms with garlic & thyme, (v) ..... £3.95 on sourdough toast

Baked beans (v) ..... £3.95

**EXTRA ITEMS**

Baked beans ..... 0.50p

Grilled tomato ..... 0.50p

Black pudding ..... 0.95p

Bacon ..... 0.80p

Sausage ..... 0.80p

Egg ..... 0.75p

Butter ..... 0.19p

Hash brown ..... 0.95p

Toast (one slice) ..... 0.50p

Preserve ..... 0.65p

All our food is prepared in a kitchen where nuts, cereals containing gluten and other allergens are present and our menu descriptions do not include all ingredients. If you have a food allergy or intolerance, please let us know before ordering. Full allergen information for food and drink is available, upon request. Dishes containing fish and hand-pulled chicken may contain small bones. Some of our dishes contain alcohol, please ask a member of staff for further information. (v) = made with vegetarian ingredients, however some of our preparation and cooking methods could affect this. If you require more information, please ask your server.



**POCCA**

Character Design

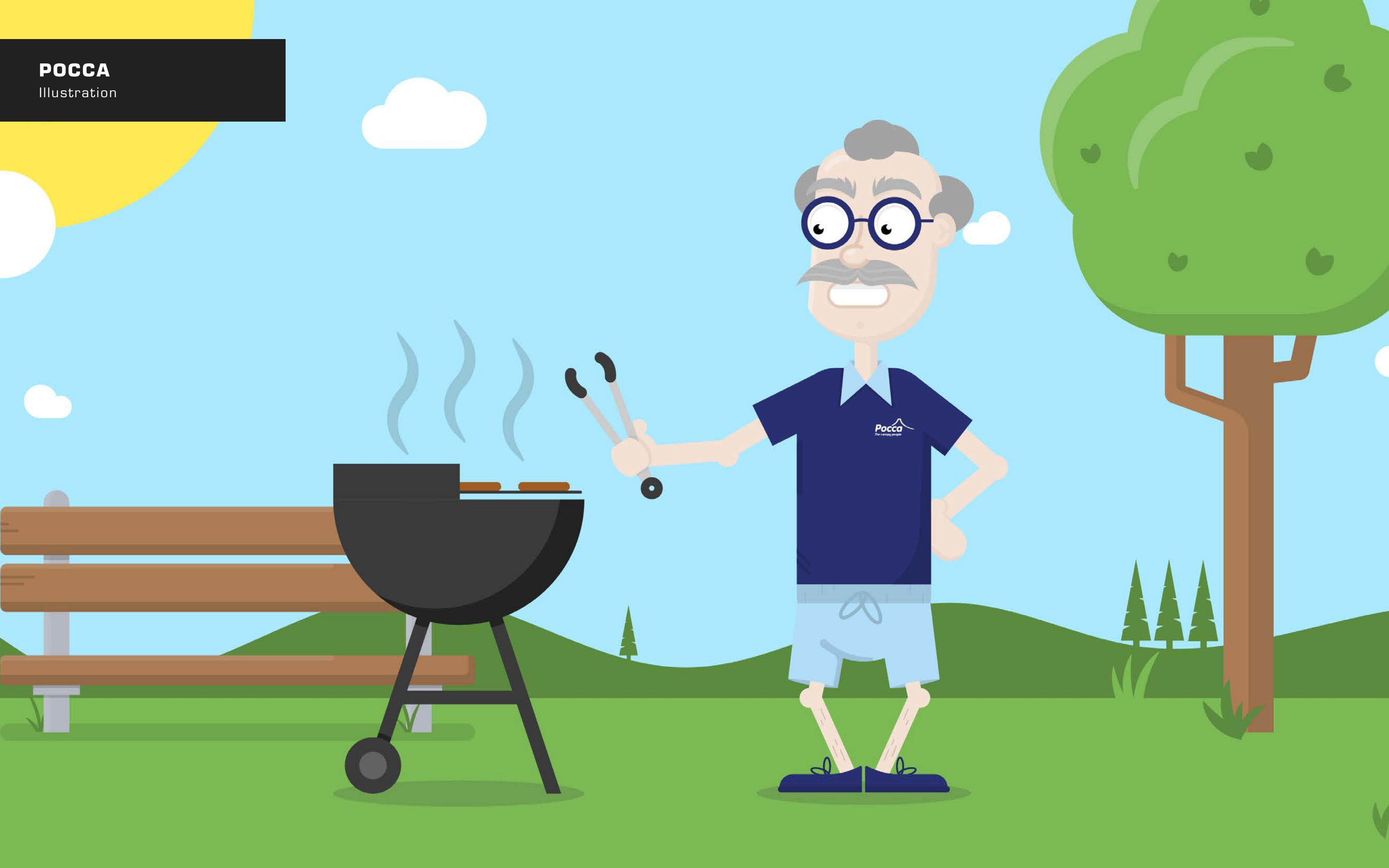
Canopy  
MAN





**POCCA**

Illustration











ONE OF THE UK'S  
LEADING MANUFACTURERS  
OF SCHOOL CANOPIES, SHELTERS AND SPORTS STRUCTURES



We design and manufacture free-standing **canopies**, **tensile structures** and **covered walkways** for schools and nurseries nationwide; creating structures that make outdoor spaces accessible for imaginative play, learning and socialising - **whatever the weather**.

Our structures are designed in accordance with relevant British Standards to withstand wind and snow loading through all seasons. Each structure is as unique as your school making the best out of the space you have.

The **Pocca unique frame** has an integral gutter, is powder-coated to a range of colours and has a high-grade tensile membrane roof to ensure the outdoor canopy provides **10+ years of effective shelter**.

BESPOKE CONSTRUCTIONS. 100% UV PROTECTION.  
LEASING AVAILABLE.



01480 498297  
info@izotld.co.uk  
www.izotld.co.uk/pocca

CALL OR EMAIL TODAY FOR A  
**FREE**  
SITE VISIT FROM OUR TEAM



**SURFIN CAFE**

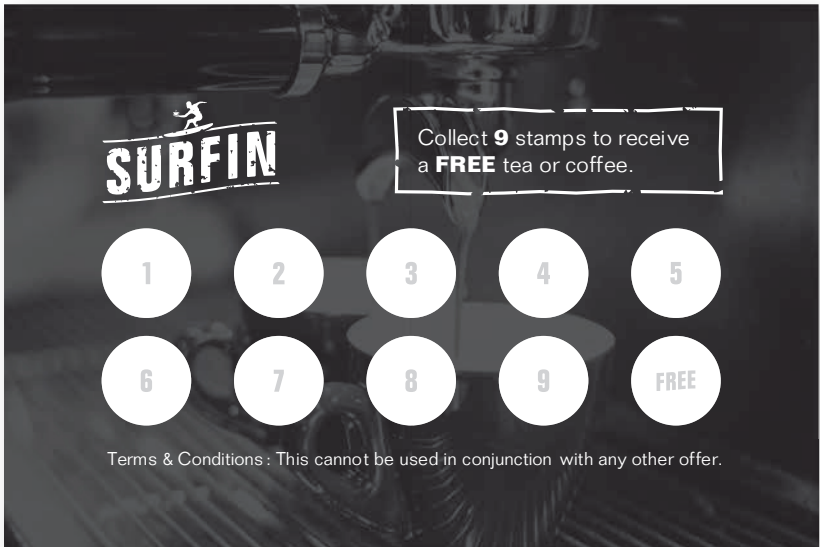
Branding





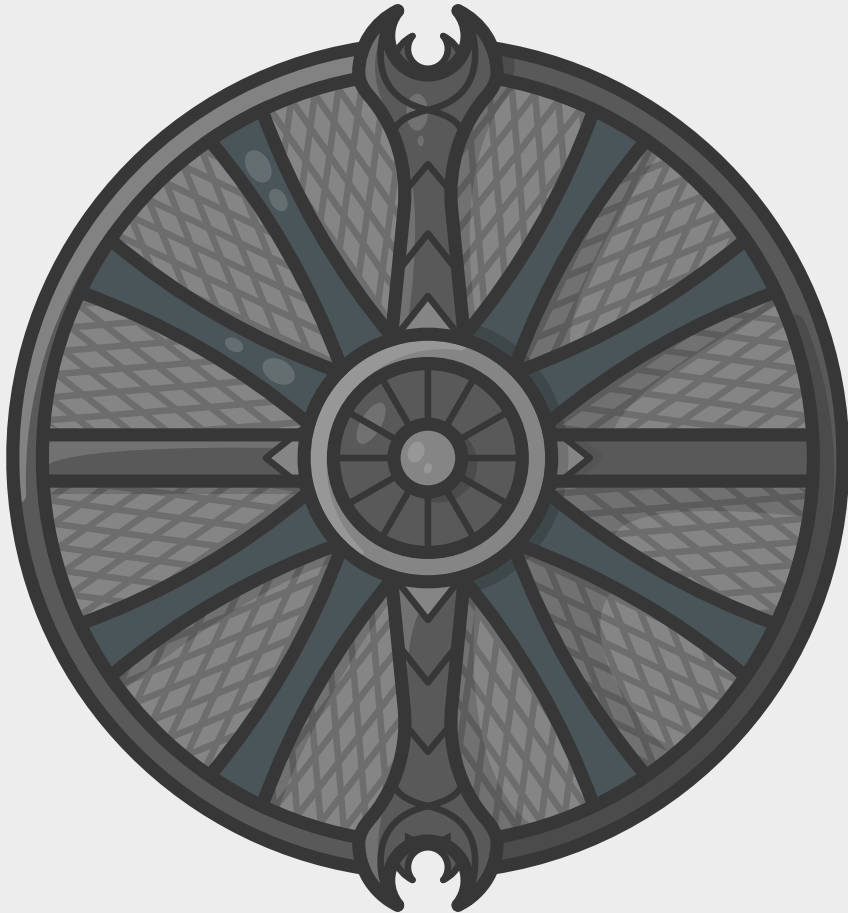


**SURFIN CAFE**  
Branding



GOD OF WAR

Illustration





**I2O LTD**

Re-Brand



**i2o LTD**

CREATING COVERS FOR ALL

**OLD**



**NEW**



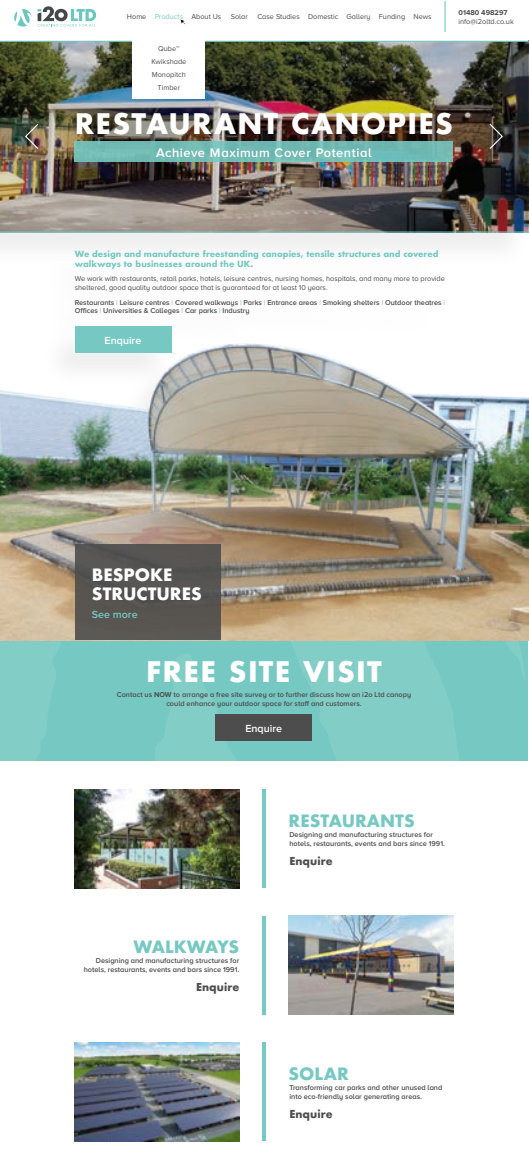
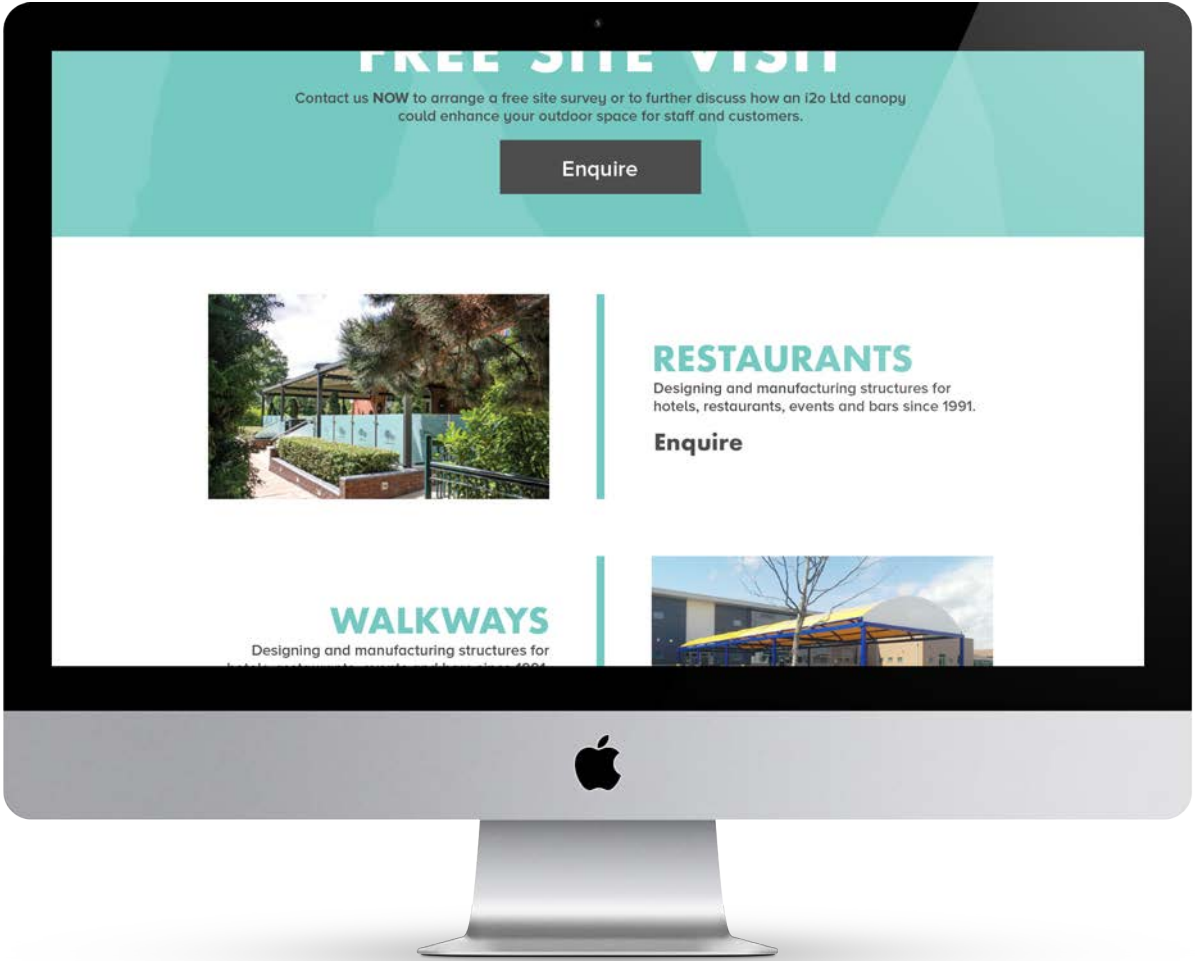
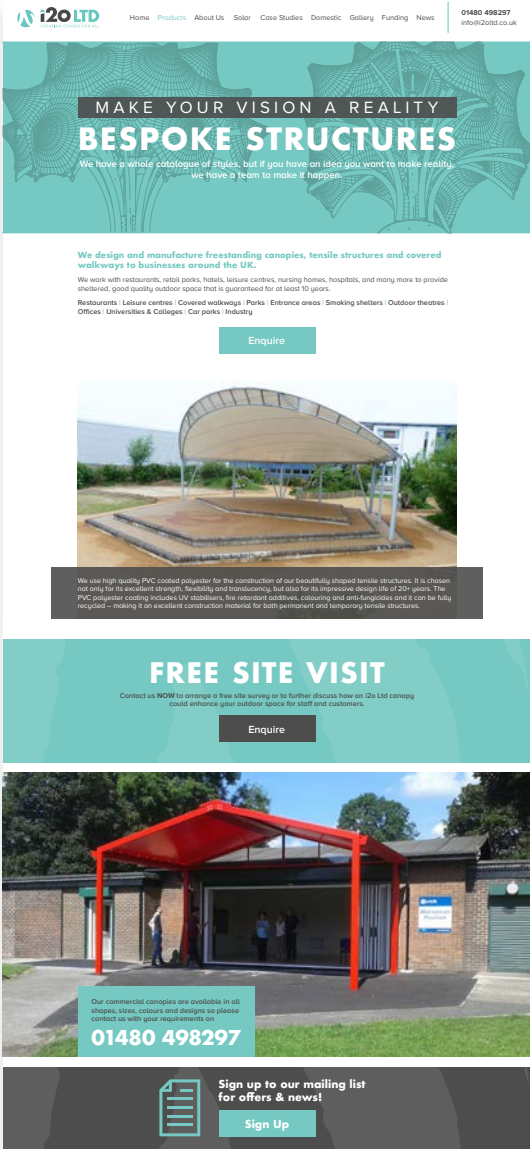


I2O LTD

Re-Brand









**HANDMADE BY LISA**

Branding



Handmade *by Lisa*

HANDMADE BY LISA

Packaging



**ARTEMIS INNOVATIONS**

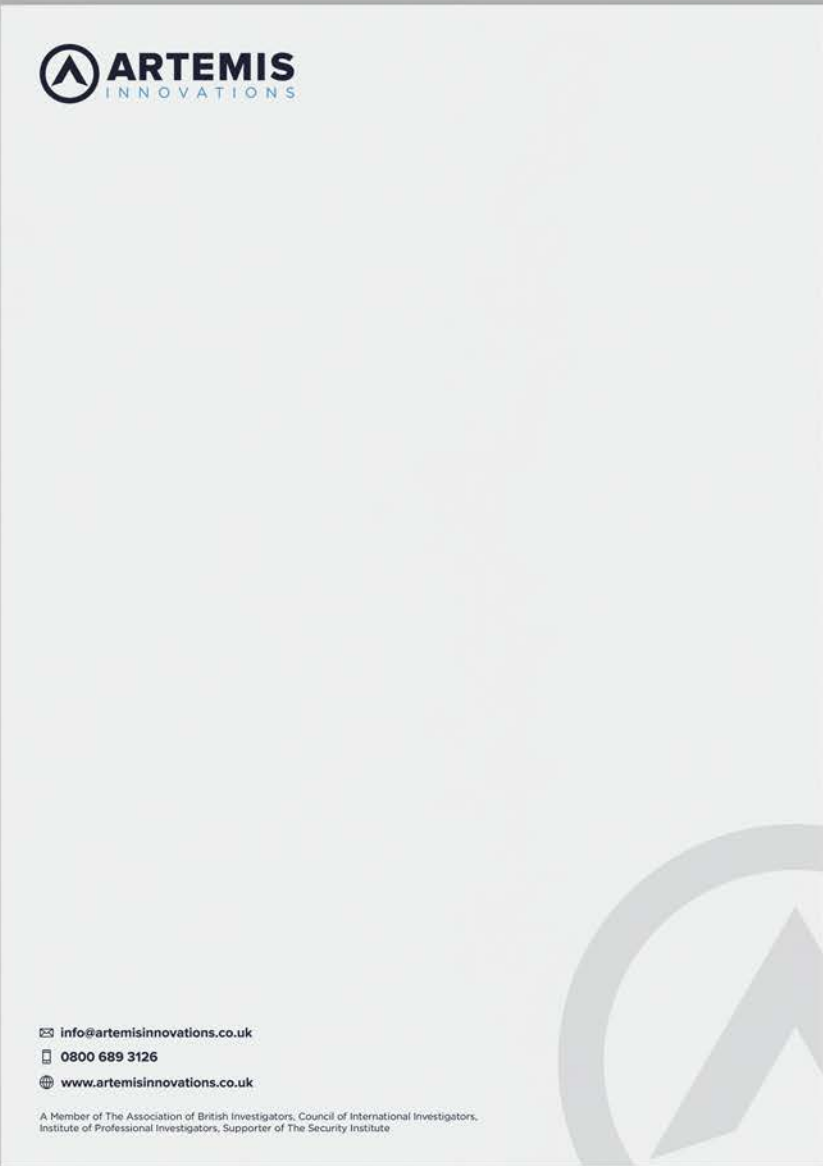
Branding



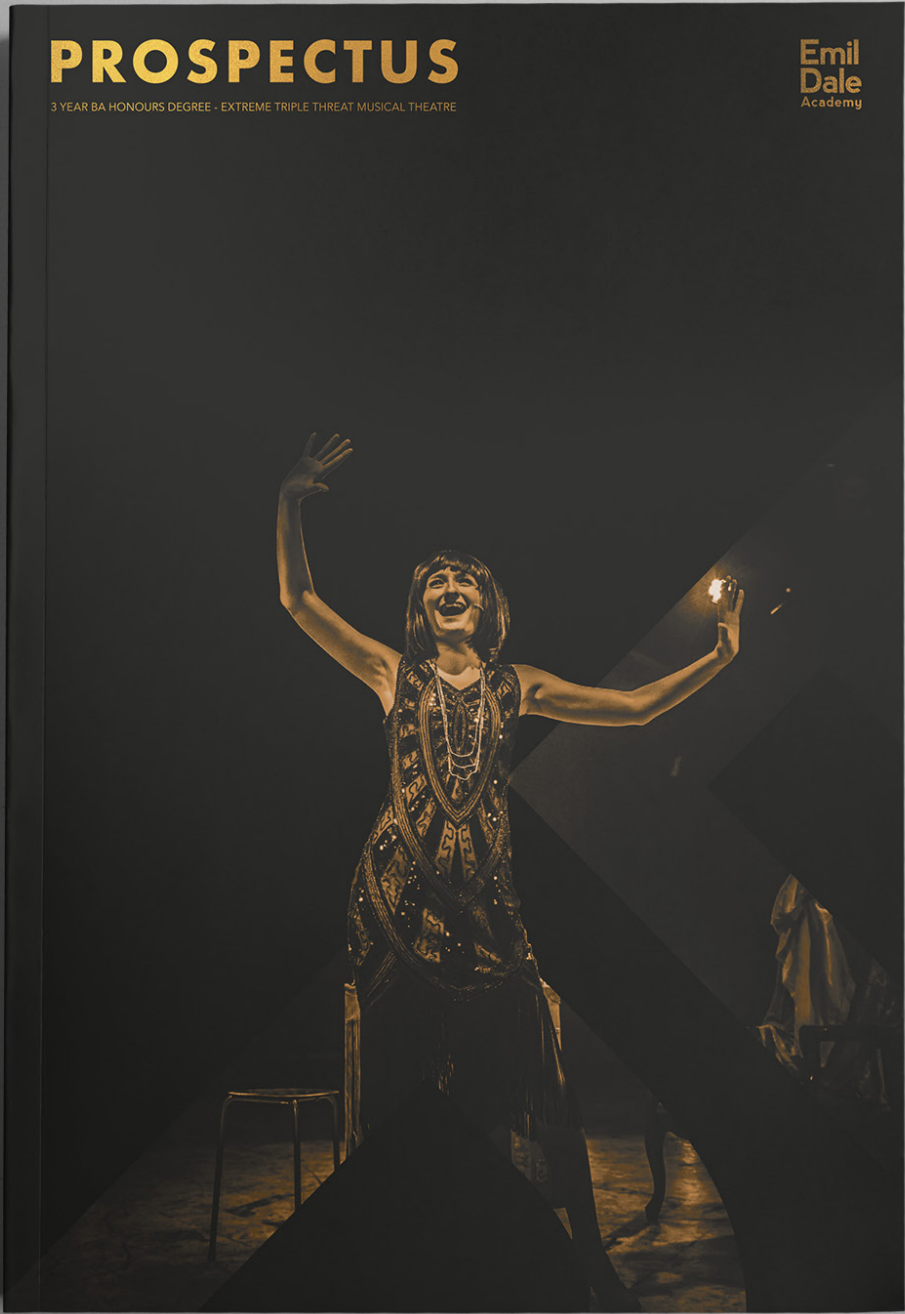


# ARTEMIS INNOVATIONS

Branding









# THE COURSE

## COURSE OVERVIEW

Our professional, triple threat BA Hons in Musical Theatre course is designed for people aged 18+. We pride ourselves on delivering an accessible degree course with no compromise on training.

We offer up to 48 places in each year group, and classes are tiered according to ability. This means no-one gets lost in the crowd and everyone is working at a pace suitable for their own needs and proficiency.

In partnership with the University of Bedfordshire, the BA Hons Musical Theatre degree course has been written specifically for Emil Dale Academy. This means it is a bespoke designed degree, meeting the requirements of a degree course, but focused on what the industry professional requires needed to train students to be industry ready in three years. The course content, teaching style, assessment and design of each class has been specifically written with a career in Musical Theatre in mind.

Surrounding the degree-focused classes are additional private sector classes that the Academy have designed as part of the overall programme. These classes do not constitute towards the degree, but are essential for building skills and knowledge that will ensure Emil Dale Academy students are graduating at the top of their game when embarking on a career in the industry.

## AUDITIONS

We audition throughout the year at both Emil Dale Academy and in other locations around the UK. There are only two things to prepare and one musical that the auditions are for: a short monologue of the auditionees own choice and one musical theatre song with sheet music.

Each auditionee will participate in a short class where they will be taught a short routine on the day, perform the song they have prepared, and participate in an acting workshop (which they do not have to prepare for).

Part way through the day, some auditionees will be invited to stay for a recall round. Here they will be required to perform the monologue they have prepared and they may be asked to sing again. Each recall auditionee will also have an interview with a member of the senior faculty.

It is important to remember that you do not have to be a ready-made performer to audition - it does not matter if you consider yourself as stronger in one discipline - our jobs is to make you strong at everything!

We also offer free open days. Apply online at [www.emildale.co.uk](http://www.emildale.co.uk)

## HOW TO APPLY

You do not have to apply through UCAS for the Emil Dale Academy degree - when you arrive at the audition you will fill in a form for direct entry to the University.

To apply for an audition, fill in a form at [www.emildale.co.uk](http://www.emildale.co.uk) and click "Apply Now". You must bring a copy of your personal statement, your passport and copies of your exam certificates.

## WHAT THE COURSE OFFERS:

- London Showcase in front of agents & casting directors in your third year
- Guaranteed professional agent representation when you finish the course
- Participation in a full-scale production representation by a live West End band accompanied by a live West End band
- Based out of our two multi-story buildings, with 11 purpose-built studios (with mirrors, sprung floors and air conditioning), 1,100+ rooms, on-site cafe and a 200-seat theatre (The Factory Playhouse, Hitchin)

## WEEKLY

- Private 1-to-1 singing lesson every week (With top industry professionals from across the UK)
- Up to 35 contact hours every week
- 3 x West End Jazz, 3 x Ensemble Singing, 3 x Technical Ballet classes and 3 x Acting classes (including acting for stage and screen, script work, improvisation and scene, theatre and audition technique)
- Physical theatre and audition technique
- 2 x Voice classes
- Cardio and body conditioning classes
- Hot Yoga Class
- Gym session with personal trainer
- Song & Dance classes - with leading West End/UK tour performers
- Guest Masterclasses - to prepare songs for auditions / castings
- Songwriting / Castings
- Tap Dance (streamed by West End/UK tour performers)
- Audition Technique (led by West End/UK tour performers)
- Commercial and Contemporary Dance
- Performance Context of Musical Theatre
- Professional Development with industry professionals providing advice and guidance in various aspects of the industry
- Musical Theatre Industry & business practices

## TERMLY

- Performance workshop (perform individually in front of your year group)
- Careers talks with industry professionals such as casting directors, agents, performers, choreographers, directors and more
- West End Masterclasses with industry professionals currently in the West End and UK Tours
- Performance opportunities (projects and productions)

Note: During show terms this is subject to change according to rehearsal schedules





# Emil Dale Academy

Private 1-to-1 Singing lessons every week  
West End & Broadway teachers  
Up to 35 contact hours a week  
Small year group & class sizes  
Classes streamed in ability  
30 mins from Kings Cross



## INTENSIVE TRIPLE THREAT

MUSICAL THEATRE TRAINING

FILL IN A FORM  
— ONLINE —  
[www.emildale.co.uk/eda](http://www.emildale.co.uk/eda)

3 YEAR BA HONS DEGREE | 2 YEAR SIXTH FORM | 1 YEAR GAP YEAR COURSES AVAILABLE

BA Hons Degree programme has access to Student Finance England, Wales, Northern Ireland and SAAS.  
Guaranteed agency representation and London agent showcase in third year

[@emildaleschool](#) | [/emildaleacademy](#)  
T: 01462 677 808 | E: [info@emildale.co.uk](mailto:info@emildale.co.uk) | [www.emildale.co.uk](http://www.emildale.co.uk)



THE FACTORY KITCHEN  
PLAYHOUSE  
15TH - 25TH MAY 2019



# IN THE HEIGHTS

A TONY AWARD WINNING MUSICAL



# IN THE HEIGHTS

Music and Lyrics by  
Lin-Manuel Miranda

Conceived by Lin-Manuel Miranda

An amateur production by arrangement with R&H Theatricals Europe

Development of In The Heights was supported by the Eugene O'Neill Theater Center during a residency at the Music Theater Conference of 2005. Initially developed by Back House Productions.

Originally Produced on Broadway by Kevin McCollum, Jeffrey Seller, Jill Furman Willis

Book by  
Quiara Alegria Hude

## CREATIVE TEAM

Producer and Director: ..... Emil Dale

Musical Director: ..... Peter Mitchell

Choreographer: ..... Matt Wesley

Assistant Director: ..... Jason Marc-Williams

Production Designer: ..... Laura Tyer

Lighting Designer: ..... John Maddox & Sarah Moore

Sound Designer/Operator: ..... Bob Bustance

Prop Manager and Costume Designer: ..... Steve Jonas & Luke Hyde

Lighting Programmer: ..... Holly Morton

LX Operator: ..... Matt Somerville

Sound No. 2: ..... Al Rivers

Technical Fit up Team: ..... Morgan Gardiner, Ashley Chappell, Phil Rowland-Morris, Ronnie Burden, Jack Chambers, Jake Seabrook & Alfie French

Scenic Artist: ..... Paul Johnson

Graffiti Artist: ..... Molly Hillier

..... Anonymous

# Emil Dale

## THE FACTORY PLAYHOUSE HITCHIN

EST MAY 2015 - THE FACTORY IS A NOT FOR PROFIT ORGANISATION

### Hello all and a very warm welcome to the Factory Playhouse Hitchin

During this performance, we will take you to a very hot day in Washington Heights, New York...all from the comfort of the Factory Playhouse Hitchin.

We are delighted to be sharing our 5 year anniversary of the Factory Playhouse with you as we bring you the Tony Award winning musical "In The Heights", accompanied by a live West End band. With music & lyrics by Lin-Manuel Miranda, writer of the critically acclaimed international phenomenon "Hamilton" and Disney's "Moana", "In The Heights" is an exhilarating journey into Washington Heights, one of Manhattan's most vibrant communities.

This groundbreaking 21st century musical is about what it takes to make a living, what it costs to have a dream and what it means to be at home, all with a gripping score fusing latin and hip-hop.

You are currently sitting on the first floor of what was once a disused factory. The Emil Dale Academy moved into the building in August 2014, converting the larger rooms into studios with sprung floors and mirrored walls, and turning the main factory production room into a fully functional theatre.

Due to space restrictions within the auditorium itself, the full West End band is located in a studio on the ground floor and is wired from the studio to the theatre. You will be sure to notice the Musical Director on a screen either side of the theatre.

The Academy also has converted a second building (just round the corner) over the last year to offer even more space to allow for the expansion of the academy as we have embarked on our degree programme this year.

For the past five years, we have created immersive theatre with high production values, and we strive to continue to bring you high-quality professional productions. We are very proud that the Factory Playhouse is a not-for-profit theatre, we invest all money back into our theatre to improve equipment and facilities year after year.

This production is performed solely by our first and second year STEC students; a full time, intensive sub-form musical theatre course in proud partnership with The Knights Templar School, Baldock.

The cast, creatives and support staff have worked tirelessly to bring you a different genre of musical that is entirely new for the Playhouse Factory. In a perfect blend of ethnic groups, musical genres, and lovable characters, "In The Heights" has been a huge challenge but a chance to step out of the comfort zone and let our Emil Dale Academy students showcase even more of their incredible talents.

We always and have and always will remain extremely grateful for your continued support.

Please be sure to join us for our 10 Year Anniversary Concert LIVE at the O2 Arena. Tickets available from <https://www.theo2.co.uk/events/venue/indigo-at-the-o2> and A Night at The Musicals showcase, details can be found online at [www.factoryplayhouse.com](http://www.factoryplayhouse.com)

Enjoy the show

### Emil and the team

**FIND US ONLINE:** @factoryplayhouse @emildalestudios

**PAST PRODUCTIONS:** West Side Story (2015) | Grease (2016) | Les Miserables (2017) | Hairspray (2017) | Thoroughly Modern Millie (2018) | Legally Blonde (2018) | Sweeney Todd (2018)

"Absolutely fantastic! What a talented bunch of young actors. Highly recommended - the production was as good - if not better - than a West End show! Well done all!"

"Who needs the West End when you have The Factory Playhouse ?? This was our first visit to The Factory Playhouse and it will not be our last!"

"Amazing performances! We have been to 3 different shows now and the standard is so high. It's as good, if not better, than you see in any west end theatre! Love the intimacy of the stage and seating!"





ACCESS  
WORLD

**about us**

Access World offers complete logistics, storage and supply chain solutions, tailor-made to your individual requirements. From the initial place of production through to the final place of consumption we are able to meet all of your supply chain needs.

Services include:

- delivery to and storage at load port;
- break-bulk or containerised vessel transportation;
- container stuffing and de-stuffing;
- bulk cargo handling;
- discharge at destination port;
- exchange and physical warehousing;
- material cleaning, reconditioning, cutting and packaging;
- customs formalities;
- delivery to final destination by road, rail or water.

In addition, we also provide value added services such as stock monitoring and collateral management.

**products**

We specialise in the handling and storage of commodities including soft commodities, forest products, non-ferrous metals, steel, ferro alloys as well as general and project cargo.

**reliable, flexible and friendly approach**

Reliability and professionalism are engrained into our character and flexibility is part of the package. Solutions are built around our clients.

Your partner in logistics and warehousing. Locally. Globally.



# ZELDA

Illustration







**TOM FLINDERS DESIGN**

07834 789 625

flinders.tom@gmail.com

[www.tomflindersdesign.co.uk](http://www.tomflindersdesign.co.uk)